

THIS DRAWING IS UNPUBLISHED.

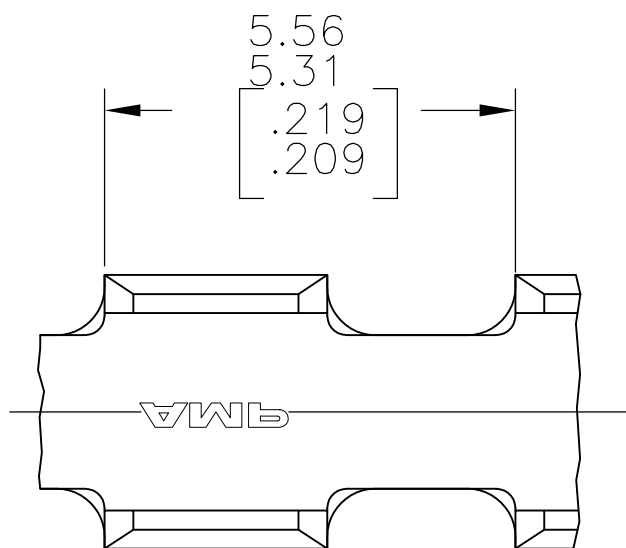
RELEASED FOR PUBLICATION

REVISIONS

© COPYRIGHT - By -

ALL RIGHTS RESERVED.

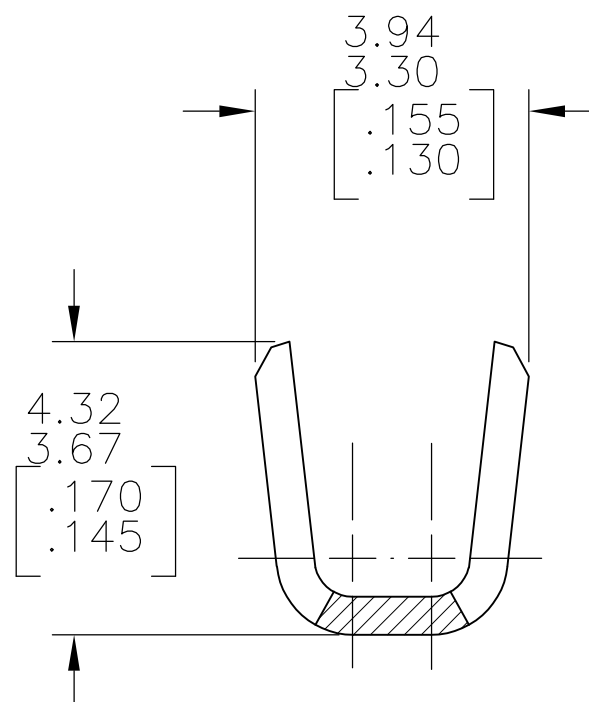
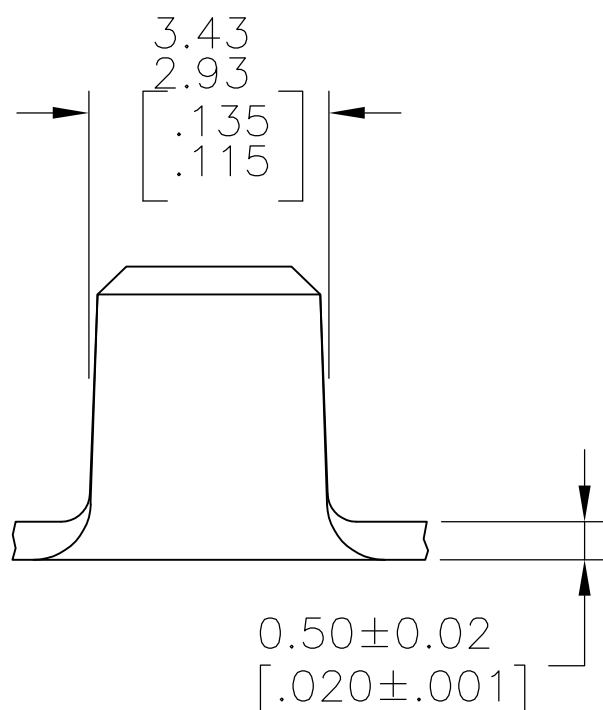
| P | LTR | DESCRIPTION | DATE | DWN | APVD |
|---|-----|---------------------------|-----------|-----|------|
| | L2 | REVISED PER ECR-15-016346 | 07MAY2016 | NK | LP |



1 PRODUCT PROVIDED IN STRIP FORM ON REELS;
BREAKS MAY BE PRESENT.

2 WIRE RANGE FOR NEW APPLICATIONS : 1.27–2.38mm²
[2500–4700 CMA] (WIRE RANGE APPROVED FOR
APPLICATIONS IMPLEMENTED PRIOR TO 2005: 2048–4217 CMA).

3 CRIMP WIDTH: 3.05[.120] F TYPE. CRIMP HEIGHT IN INCHES
(±.002)=(TOTAL CMA OF WIRES+12240/220000).



| | | | | |
|----------|------------------|--------|----------|--------------------|
| OBSOLETE | 2 | NONE | BRASS | 60932-4 |
| | | TIN | STEEL | 60932-2 |
| | WIRE SIZE CMA | FINISH | MATERIAL | PART NO. |

| | | | | | |
|---|--|------------------------------|----------------------------|-----------|--------------|
| THIS DRAWING IS A CONTROLLED DOCUMENT. | | DWN DK SCHRUM 5/18/89 | STE TE Connectivity | | |
| DIMENSIONS: mm [INCHES] | | CHK JR RUTH 7/13/89 | | | |
| TOLERANCES UNLESS OTHERWISE SPECIFIED: | | APVD D SCHWENK 7/13/89 | NAME | | |
| 0 PLC ± - | | PRODUCT SPEC | SPLICE | | |
| 1 PLC ± - | | APPLICATION SPEC | RESTRICTED TO | | |
| 2 PLC ± 0.25[.010] | | 114-2088 | SIZE | CAGE CODE | DRAWING NO |
| 3 PLC ± - | | WEIGHT | A3 | 00779 | C-60932 |
| 4 PLC ± - | | CUSTOMER DRAWING | SCALE 10:1 | | SHEET 1 OF 1 |
| ANGLES ± - | | | | | REV L2 |
| MATERIAL SEE TABLE | | FINISH SEE TABLE | | | |